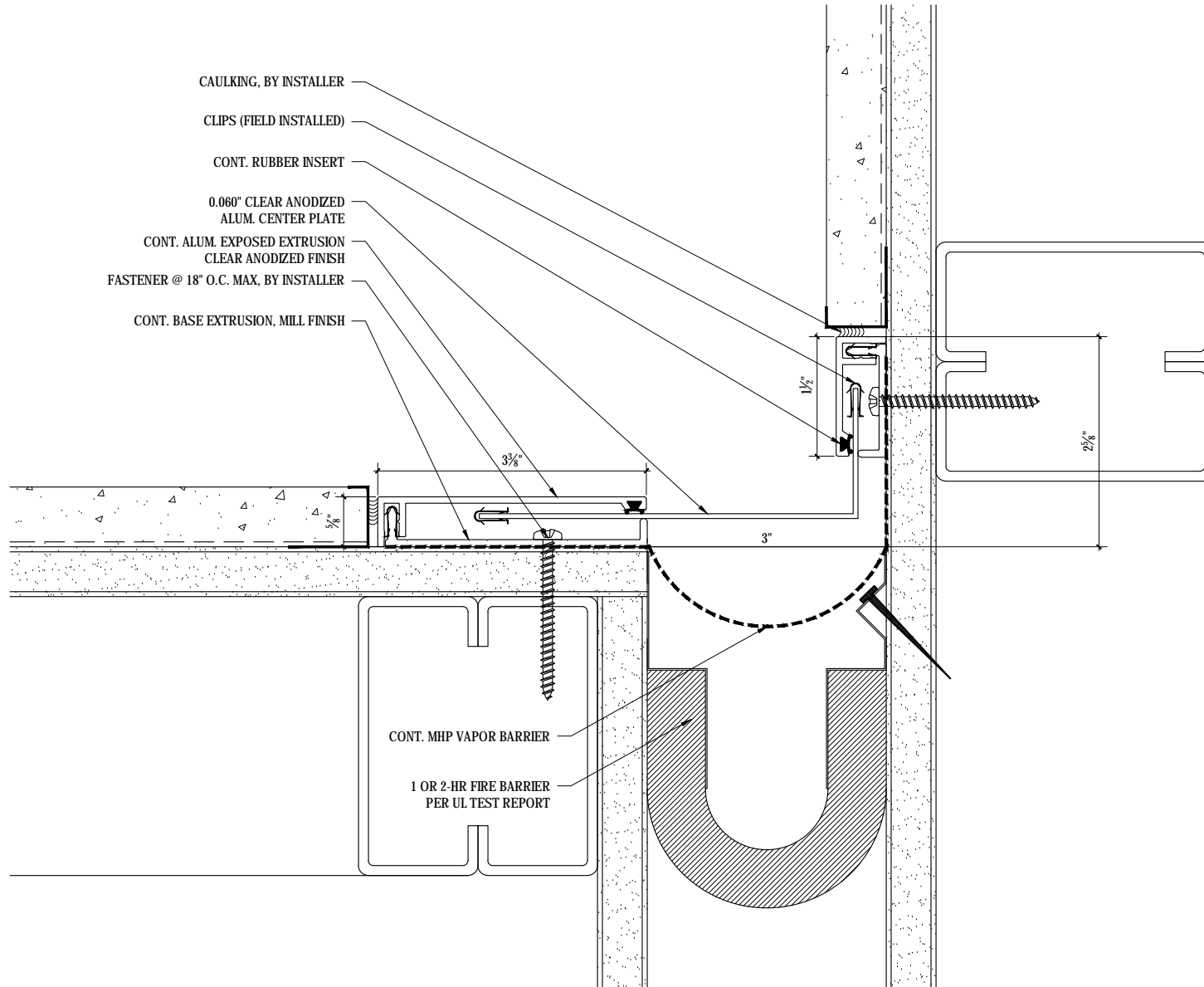


- CAULKING, BY INSTALLER
- CLIPS (FIELD INSTALLED)
- CONT. RUBBER INSERT
- 0.060" CLEAR ANODIZED  
ALUM. CENTER PLATE
- CONT. ALUM. EXPOSED EXTRUSION  
CLEAR ANODIZED FINISH
- FASTENER @ 18" O.C. MAX. BY INSTALLER
- CONT. BASE EXTRUSION, MILL FINISH



SCALE: 6"=1'-0"



**M.H. POWELL & CO., INC.**  
ARCHITECTURAL SEISMIC EXPANSION JOINT SYSTEMS

2313 YATES AVENUE | PHONE : (323) 887-0037  
 COMMERCE, CA 90040 | FAX : (323) 887-0877  
 WEB : www.mhpowell.net

**MODEL**  
**KF-3-1.5**

WALL/CEILING CORNER EJC

PROJECT : \_\_\_\_\_ PROJECT # : \_\_\_\_\_  
 LOCATION : \_\_\_\_\_ DATE : \_\_\_\_\_  
 ARCHITECT : \_\_\_\_\_  
 CUSTOMER : \_\_\_\_\_

PAGE #